



FORMA
HILLSONG MINISTRY SCHOOL

**STUDENT
PROSPECTUS
2027**





**HELLO FROM
TIM & NICOLA**

Hey there,

We're so excited you are considering applying to FORMA for 2027!

There comes a moment when you know you are being called to go deeper. To invest in your growth, to stretch your faith, and to step into all God has placed within you. This School has been designed to create that very space for you!

Whichever course you choose, you will learn principles that will form lifelong practices to become a whole and healthy disciple of Christ, equipped to serve His Church with greater strength and confidence.

This is not just about study and practical experience, it's about transformation. As part of the school community, you'll journey alongside like-minded students, building friendships that sharpen and encourage you.

By applying, you're choosing to invest in the potential that is within you. If you're hungry to grow, ready to be stretched, and willing to learn, then we would love to see you as part of the 2027 school community.

Tim and Nicola Douglass – UK Lead Pastors

WHY FORMA?

The word “Forma” originates from the Latin word “fōrma,” meaning to shape and structure.


Throughout Scripture, we see that God is not merely interested in what we know, but in who we are becoming.

“Do not conform to the pattern of this world but be transformed by the renewing of your mind.” – Romans 12:2

At FORMA, you won’t just study Scripture, you’ll be shaped by it. You won’t just explore calling, you’ll be formed for it.

Because we believe that who you become in Christ is the foundation of everything you do for Christ.

Some may be called to preach, some to serve behind the scenes, and others to influence in business, education, or the arts. Whatever the context, formation comes first.



DO NOT CONFORM TO THE PATTERN OF
THIS WORLD BUT BE TRANSFORMED BY THE
RENEWING OF YOUR MIND



NAOMI
Newcastle

“I chose to do FORMA as I really felt God stirring something in my heart to study the Bible in a deeper way. I started searching for online courses, but none of them truly stood out to me. Then I heard about FORMA and instantly I just knew this was the course God was leading me to do and it truly has been an answer to prayer. Since starting FORMA, I haven’t just gained a deeper understanding of the Bible but it has helped me grow in faith and character while keeping my eyes fixed on Jesus.”



JOSSY
Birmingham

“I decided to join FORMA as I strongly believed it was the right next step in my journey with Christ, and I wanted to know a LOT more about Him and His Word. I’ve been able to deepen my understanding of Scripture and grow in my personal relationship with God, while also learning how to apply biblical wisdom to my day-to-day life. FORMA has equipped me with tools that will continue to shape my walk with Jesus and how I serve others.”



SIMON
Edinburgh

“When I first heard about FORMA launching, something stirred in my spirit, and I knew it was time to pursue ministry once again. The Leadership and Biblical topics have been superb, with voices from across the globe sharing and imparting wisdom and knowledge to us. It’s inspired me, stretched me and reminded me of the great honour it is to be part of something bigger than just myself or our location - but building His Church.”



JEMIMAH
Reading

“I chose to join the Hillsong FORMA Leadership course because the local church has played such a significant role in my faith journey. It’s a place where I’ve seen God move, where I’ve been shaped through serving, and where my desire to lead others well has grown. FORMA is giving me the opportunity to deepen my understanding of leadership, grow in my character and better serve others in the way God is calling me to.”



JAVIER MAURICIO
London

“I joined FORMA because I believe God is calling me to grow into the leader He designed me to be. In every team I’ve led at church and at work, I’ve seen moments where I could have led with more grace, humility, and wisdom. Through Jesus, I know I can become a leader shaped by His heart. I also chose this journey because I long to know Him more deeply and speak about His love and His kingdom with confidence. Saying yes to FORMA feels like saying yes to God’s purpose for my life. I’m grateful for this opportunity.”



ABBY
London

“For a long time, I’ve felt a gentle stirring to engage more deeply with Scripture to understand not just the words I share, but the heart behind the songs I sing church. I’ve also longed to be stretched, to grow beyond what feels familiar and be shaped in a deeper way. Joining FORMA felt like an answer to prayer. It’s given me a way to learn that feels both accessible and life-giving, allowing me to grow at my own pace. Through it, I’ve found a richer language for my faith and a fresh love for God’s word.”



FOUR COURSES, ONE COMMUNITY

THERE ARE FOUR COURSES
TO CHOOSE FROM IN 2027
JANUARY–OCTOBER

- 01 BIBLICAL STUDIES
- 02 LEADERSHIP
- 03 CREATIVE
- 04 ACADEMY

Each course has been designed with different levels of commitment in mind, so there's an option to suit your availability and season of life, whether you're balancing full-time work, ministry, or other responsibilities.

To help you visualise this, the next page provides an overview of each course, including expected weekly* time commitment, total number of topics covered, and what's included in your student experience.

Pages 8-11 explain each course in detail, and on page 12, you can find all key dates for 2027.

All courses include live online and on-demand classes, and three core national in-person gatherings in London:

- **Induction Day** – January
- **Forma One Day** – May
- **Conference** – October

Leadership, Creative and Academy feature additional in-person and live online sessions. You can see all key course dates on page 12.

* This is the average weekly time we estimate you will spend as a student at school, taking into account in-person days, online sessions, assessments and recommended personal study time.

APPLY TODAY



DESIGNED FOR

WEEKLY TIME COMMITMENT

WHAT'S INCLUDED?

ENTRY REQUIREMENT

01 BIBLICAL STUDIES

Forming biblically grounded disciples with strong theological foundations.

4–6 Hours

8 Biblical Topics
4 Leadership Topics
2 In-Person Teaching Days
1 In-Person Local Session
Conference*

Application form

02 LEADERSHIP

Equipping emerging and existing leaders to grow in confidence, character, and influence.

6–8 Hours

8 Biblical Topics
7 Leadership Topics
4 In-Person Teaching Days
1 In-Person Local Session
Leadership Project | June–October
Conference*

Application Form, Pastoral Reference, 15-minute call

03 CREATIVE

Empowering storytellers and facilitators from all creative disciplines through the arts.

8–10 Hours

8 Biblical Topics
7 Leadership Topics
4 Creative Topics
5 In-Person Teaching Days
1 In-Person Local Session
Creative Project | Summer Term
Conference*

Application Form, Pastoral Reference, 15-minute call

04 ACADEMY

Equipping 18–25 year olds to develop as emerging leaders through practical ministry experience.

10–15 Hours

8 Biblical Topics
8 Leadership Topics
4 Creative Topics
5 In-Person Teaching Days
1 In-Person Local Session
Weekly Midweek and Sunday Involvement (Term Times Only)
Summerfest
Conference*

Interview before application. Pastoral Reference

*Volunteer ticket type

01

BIBLICAL STUDIES

**FORMING BIBLICALLY GROUNDED
DISCIPLES WITH STRONG
THEOLOGICAL FOUNDATIONS**



Average Weekly
Commitment 4–6 Hours



8 Biblical Topics



4 Leadership Topics



5 Assessments



2 In-Person Teaching Days



1 In-Person Local Session



Conference



Cost £600

Ideal for anyone seeking a deeper knowledge and understanding of the Bible. Covering topics such as:

- Exodus, Exile and Identity
- Kings and Prophets
- Jesus and the Early Church
- Revelation – The End and New Beginning

Students will be expected to attend the scheduled live online sessions and then receive on-demand sessions each week to learn at their own pace.

There are five required assessments to be submitted during the year.

This course also includes one in-person local session, which will take place at your Church Location during April and will be arranged during your studies.

Your end of year celebration will take place at Hillsong Conference.

02

LEADERSHIP

EQUIPPING EMERGING AND EXISTING LEADERS TO GROW IN CONFIDENCE, CHARACTER, AND INFLUENCE.



Average Weekly Commitment 6–8 Hours



8 Biblical Topics



7 Leadership Topics



5 Assessments



4 In-Person Teaching Days



1 In-Person Local Session



Leadership Project | June–October



Conference



Cost £700

As well as studying Biblical topics so you grow in your foundational theology, those on the leadership course will also participate in additional live online and in person sessions covering a range of leadership topics such as:

- Servant Leadership
- Emotional Intelligence
- Integrity and Character
- Communication and Influence
- Resilience and Well-Being

The additional in-person teaching days will take place on two Thursdays, when you're invited to spend the day with our UK-wide team in London. This includes attending our staff meeting, lunch and afternoon session.

These Thursdays will be a meaningful opportunity to connect, grow, and experience the heart of church life behind the scenes. As this may require time off work, attendance is optional.

There are five required assessments to be submitted during the year.

This course also includes one in-person local session, which will take place at your Church Location during April and will be arranged during your studies.

03

CREATIVE

EMPOWERING STORYTELLERS AND FACILITATORS FROM ALL CREATIVE DISCIPLINES THROUGH THE ARTS.



Average Weekly Commitment 8-10 Hours



8 Biblical Topics



7 Leadership Topics



4 Creative Topics



5 Assessments



5 In-Person Teaching Days



1 In-Person Local Session



Creative Project | Summer Term



Conference



Cost £800

For those with an interest in Production, Worship and Communications. As a creative student, you will cover the same topics as Biblical Studies and Leadership students to ensure foundational theology and leadership development is at the centre of your creativity.

Your additional online and in-person creative sessions will cover topics such as:

- The Art of Storytelling
- Practice
- Preparation
- Presentation

This course includes one in-person local session, which will take place at your Church Location during April and will be arranged during your studies.

In addition to this you will also join the UK-wide team in London for three Thursdays throughout the year. The additional in-person teaching days will take place on two Thursdays, when you're invited to spend the day with our UK-wide team in London. This includes attending our staff meeting, lunch and afternoon session.

These Thursdays will be a meaningful opportunity to connect, grow, and experience the heart of church life behind the scenes. As this may require time off work, attendance is optional.

There are five required assessments to be submitted during the year.

04

ACADEMY


EQUIPPING 18–25 YEAR OLDS TO DEVELOP AS EMERGING LEADERS THROUGH PRACTICAL MINISTRY EXPERIENCE.

 Average Weekly Commitment 10–15 Hours

 8 Biblical Topics


 8 Leadership Topics

 4 Creative Topics

 5 Assessments

 5 In-Person Teaching Days

 1 Local Input Session

 Weekly Midweek And Sunday Involvement (Term Time Only)

 Summerfest – Delegate

 Conference

 Cost £900

Only available in selected Hillsong Locations.

This is a unique experience for 18–25 year olds only, where you cover every topic across all courses, plus MORE.

Ideal for those who are exploring ministry, a future in church leadership or would just love to spend a year invested in their location. Academy students will be involved in the weekly rhythm and running of their locations.

A typical week in location during term time includes:

- One midweek day
- One midweek evening
- One Sunday service

Your school fees include a full delegate ticket to Summerfest as well as your team ticket to Conference, where we will celebrate alongside all school students the end of an unforgettable year.

Academy spaces are limited and only available in selected Hillsong Locations. An online interview is required before applying.

FORMA KEY DATES

KEY DATES BIBLICAL STUDIES

January – 30th Induction Day

February – 3rd + 10th

March – 10th

April – 28th + Local input session
date TBC

May – 22nd

June – 9th

July – 14th

August – Summer break +
optional WATOTO trip

September – 1st

October – 6th + Conference

KEY DATES LEADERSHIP

January – 30th Induction Day

February – 3rd + 10th + 24th

March – 18th, 10th + 24th

April – 28th + Local input session
date TBC

May – 22nd

June – 9th + 23rd

July – 14th + 22nd

August – Summer break +
optional WATOTO trip

September – 1st + 15th

October – 6th + Conference

KEY DATES CREATIVE

January – 30th Induction Day

February – 3rd + 10th + 24th

March – 18th, 10th + 24th

April – 14th + 28th + Local input
session date TBC

May – 22nd

June – 9th + 23rd

July – 7th + 22nd

August – Summer project +
optional WATOTO trip

September – 1st + 15th + 23rd

October – 6th + Conference

KEY DATES ACADEMY

January – 30th Induction Day

February – 3rd + 10th + 24th

March – 18th, 10th + 24th

April – 14th + 28th + Local input
session date TBC

May – 12th + 22nd

June – 9th + 23rd

July – 7th + 22nd

August – Summerfest + optional
WATOTO trip

September – 1st + 15th + 23rd

October – 6th + Conference

-  In Person Dates – London-based
-  Live Online Dates

We expect a minimum attendance rate of 80% throughout the school year. Before you apply, please check your availability.



Watoto



EXPERIENCE WATOTO EXPLORE UGANDA

Visit the villages and see the transformative work God is doing through Watoto in reaching orphaned and vulnerable children with the love of Jesus.

Spend time with the team at Watoto, a church of 35,000+ people reaching and serving its local community and serve alongside volunteers one Sunday morning.

Visit the Ndere Cultural Centre to experience a showcase of Uganda's culture through song, dance and spoken word.

Spend time with two of their projects: 'Watoto360', discipleship program and 'Keep a Girl in School', and to end your week, walk with rhinos at Ziwa Rhino Sanctuary, encountering one of the big five up close and personal.

This trip is exclusively for present and alumni students.

**30TH JULY –
6TH AUGUST 2027**

£1650

Inclusive of flights, meals, accommodation, and ground transportation. Secure your place for £100

For more information, email:
school@hillsong.co.uk



FEES & APPLICATION

BIBLICAL STUDIES £600

LEADERSHIP £700

CREATIVE £800

ACADEMY £900

This includes all in-person and online sessions, your 2027 experience at Hillsong Conference, and for Academy students your full delegate Summerfest ticket.

At the point of application, you can choose to pay in full or pay a deposit and the remaining balance by **31 January 2027**.

All fees must be paid in full by **31 January 2027**.

Your school fees do not include any additional reading materials you may choose to purchase, or your travel costs for in-person days. As all dates are provided at the start of your school experience, you will be able to plan your travel ahead of time.

For courses that require a 15-minute call post application, a link will be sent to you to book your preferred date and time.

APPLY TODAY



FAQs

Q – WHICH COURSE IS RIGHT FOR ME?

The **Biblical Studies** course is for those who hunger to go deeper in Scripture, offering a flexible experience with fewer in-person days and on-demand learning at your own pace.

The **Leadership** course is designed for those already leading, or aspiring to do so, within their church or workplace. Equipping you to grow in influence, responsibility, and integrity.

The **Creative** course empowers storytellers and creatives across Production, Worship, and Communications to share the Gospel through their craft.

Both **Leadership** and **Creative** include hands-on ministry projects, developing practical skills and shaping leaders who serve with character and conviction.

Academy is a unique course for emerging leaders aged 18–25, immersing students in every area of school life while building strong rhythms, community, and leadership foundations. Students also step into the weekly life of their Hillsong location, gaining hands-on ministry experience alongside local and national leaders.

Q – CAN I DO A SECOND YEAR?

You are more than welcome to; however, at this stage, the teaching content is repeated each year. For that reason, we would only recommend completing a second year if you are choosing a different course.

Q – WHO WILL BE DELIVERING SESSIONS?

Alongside our national Hillsong UK staff, we will be bringing a selection of incredible teachers and leaders to contribute.

Q – WHAT HAPPENS AFTER I'VE COMPLETED FORMA?

We hope you have the best time while at FORMA and look forward to seeing all students put everything they have learned into practice, either through building lifelong personal study patterns or leading with integrity in your church or workplace.

If you would like to remain part of the FORMA community in 2028, we would welcome any alumni to consider joining the team to help host the next cohort of students.

Q – WHAT ARE THE LEADERSHIP AND CREATIVE PROJECTS?

As part of both the Leadership and Creative courses, you'll have the opportunity to put your learning into practice through a hands-on project.

Leadership Students: Your project will be directed by your church location and will take place at any point during the second half of the school year (June–October).

Creative Students: Your project will take place during the summer (July–September) and will be designed to help you apply what you've learned in a practical, creative context. Once you have enrolled, we will provide full details for your specific project.

Q – WHAT IF I CAN'T PAY MY FEES IN FULL BY JANUARY 30TH 2027?

We have been mindful of keeping the costs of FORMA at an affordable rate; therefore, unfortunately, we cannot offer financial aid or additional discounts. After December 31st 2026, any deposits or part payments cannot be refunded, and any outstanding balances after January 30th 2027, may result in your termination from school.

Q – WHAT'S INCLUDED IN THE CONFERENCE EXPERIENCE?

At Hillsong Conference 2027, we will celebrate your completion of FORMA. Your ticket type will be 'volunteer', so you can take part in team activities as well as help with the school information session. If you are unable to serve or are already committed to another team (for example, youth, kids or production). Don't worry, we will work it out with the relevant team leader, so you don't miss your celebration moment!

Q – DO YOU OFFER HELP OR SUPPORT WITH VISAS?

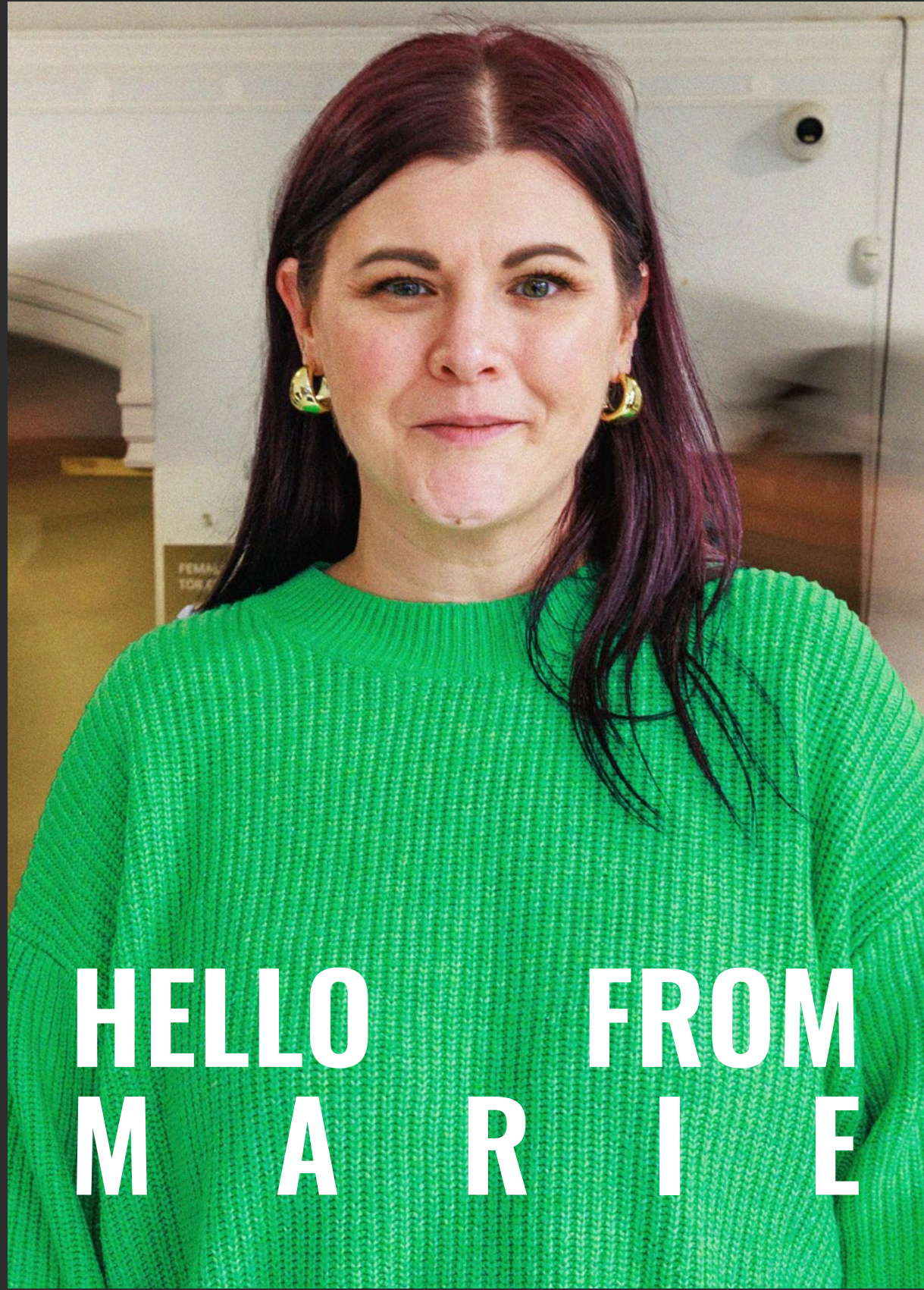
Unfortunately, not. You will need to secure independently the right documentation you need to be a UK resident during your time on FORMA.

Q – IS TRANSLATION AVAILABLE FOR NON-ENGLISH SPEAKERS

All sessions are delivered in English. At this point, we cannot offer support or translation for non-English speakers.

If you have any additional questions, please get in touch via: school@hillsong.co.uk





**HELLO FROM
MARIE**

Thank you for taking the time to review the FORMA student prospectus.

As we began to structure and shape what this school would look like, it became incredibly clear that FORMA would become a unique offering.

Throughout the UK and Europe, and across all denominations, we are seeing an increasing number of churches supported and led by volunteers. Church leaders and Bible teachers emerge from every sphere of society, not just through traditional ministry training pathways.

We're also seeing an increased desire to learn the scriptures. People seeking out the voice of God for themselves through the Word of God, rather than settling for second-hand understanding.

Therefore, creating a school that offered flexibility and a balance of time was key. Learning at your own pace quickly became a core value for FORMA.

In addition, one other core value is personal study and development. We truly long to see lifelong practices form in all our students so that they become whole and healthy disciples of Christ. We have created a variety of pathways for students to stretch themselves outside of the core curriculum, to learn, grow and explore the call from Christ on their life in their own time.

With a sharp focus on training leaders and Bible understanding disciples, I believe the way we have structured and shaped FORMA, will serve and shape you in who you are becoming.

I look forward to receiving your application and welcoming you to FORMA 2027.

Marie

**FORMA
Hillsong Ministry School Director**





FORMA
HILLSONG MINISTRY SCHOOL